

MURATA BOY Paper Craft



Assembly Direction

Download the paper craft data and print it out to assemble MURATA BOY.
Complete the paper craft using all of the parts printed.
It will make a nice family project.

* Make sure to print out all parts. Some printers may have different page settings.

Before Assembling

Necessary tools

Scissors
Paper cutter
Ruler
Tweezers
Glue
Something heavy to press down glued areas (a thick book or magazine)

*Attention!

Be careful not to cut yourself when using the scissors or paper cutter.
Make sure to use glue in a well-ventilated room.

When weighing down the glued area, make sure that the glue will not stick the parts and the weight together.

Folding and Cutting Instructions

Follow the instructions below for cutting and folding paper craft parts.

————— **Solid line**

Cut along this line using scissors.

..... **Dotted line**

Fold with this line out. (Mountain-shaped fold)

- . - . - . - . - **Dot and dash line**

Fold with this line in. (Valley-shaped fold)

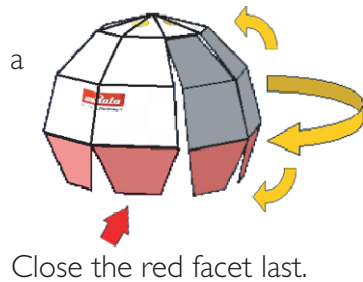
*Attention!

Some small parts may be hard to fold. You can try folding before cutting, or tracing the line with a blunt point before folding.

Before Assembling

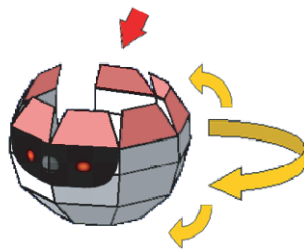
Head

Fold lightly to form a ball shape.



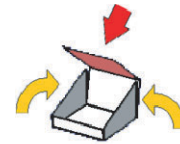
Face

Fold lightly to form a ball shape.



Neck

The neck part should be assembled like a box.

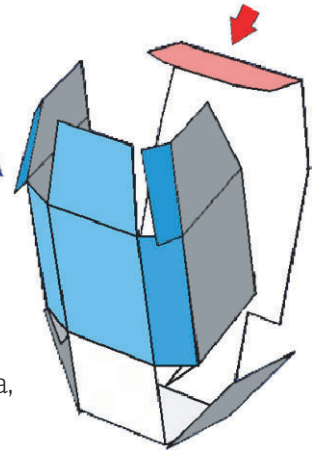


Last step

First step

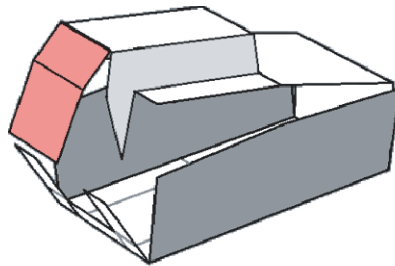
Body

For the body part, glue the chest and stomach areas first, assemble the hip area, and glue the back and neck facets together to close.



Backpack

Assemble the side of the large box. Then assemble the side of the small box. Close the red area last.

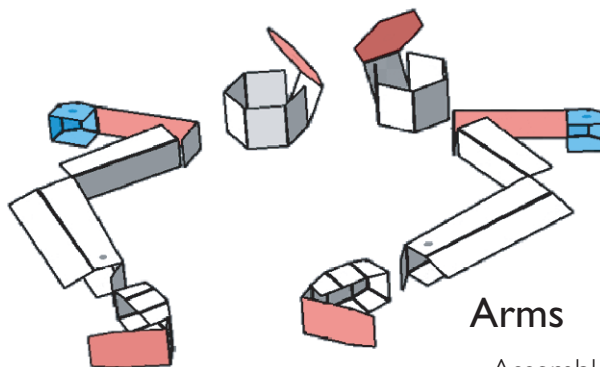


Shoulders

Lightly fold side facets to form a hexagon first.

Hands

Glue the sides to form a back of the hand. Back of the hand should be rounded. Glue the red palm last.

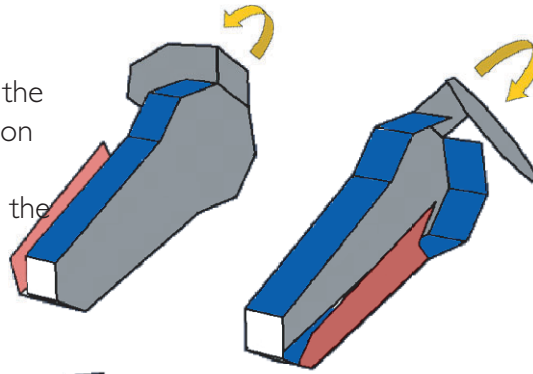


Arms

Assemble the blue elbow region first. Fold upper and lower arms into tubes. Insert the blue elbow part and glue the red facet down.

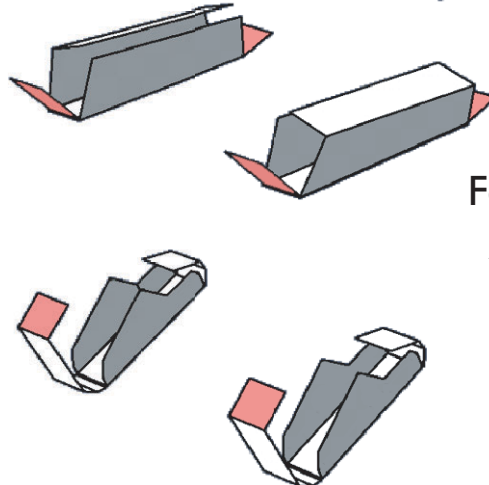
Thighs

First assemble the blue facet close to the foot, on the side of the hexagon, and on the side of the thighs. Close the hexagonal cover and the red facet on the thigh.



Shins

First form a tube then close both ends.

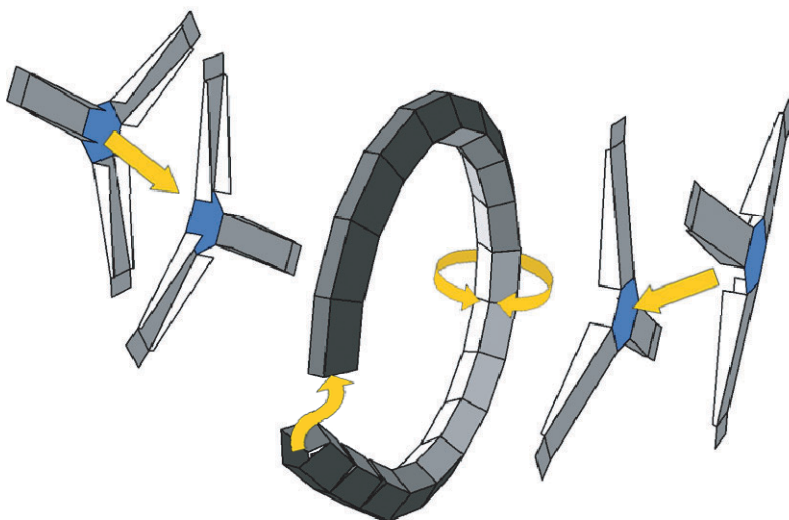


Feet

Assemble the heel area first, then close the toe area.

Front wheels and front spokes

Fold the front spokes then glue them against the blue area of the front wheels. Make tire sections one by one.



Insert the tip of the spoke into the tire and connect the tire sections.

Make sure the tire is round before the glue dries.

*Rear wheels are assembled in the same way.

Handle

The handle part is folded in half and glued.

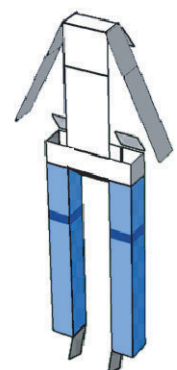


Weigh it down to make it flat until it dries.

Fork

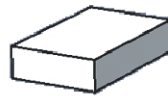
Assemble the blue tube first, and then assemble the upper portion.

*Assembling the whole fork at once causes warping.



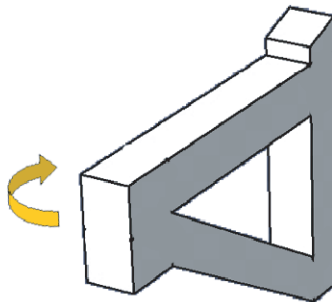
Saddle

The saddle should be box shaped.



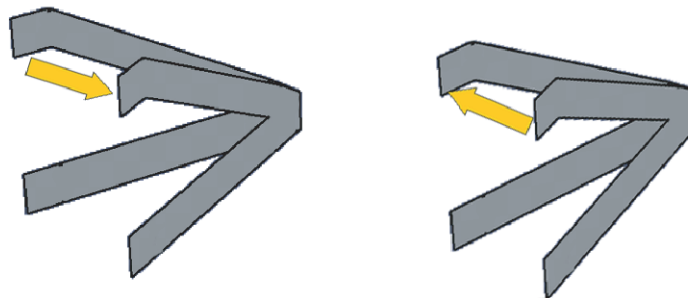
Frame (front section)

Fold and assemble shape all tubes without using glue then apply glue.



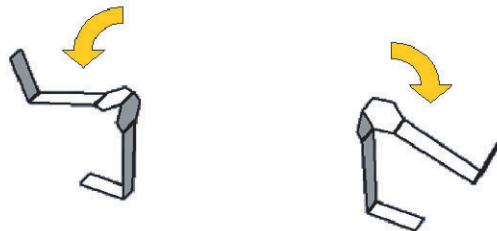
Frame (rear section)

Fold the rear section of the frame in a half and glue the halves together. Press it down with something heavy to make it flat and let it dry.



Pedals

Fold the pedal in half and then apply glue. Press it down with something heavy to make it flat and let it dry. Once the glue is dry, bend the tips.



Motor

The motor consists of a hexagonal cylinder part and the part folded in half before gluing.

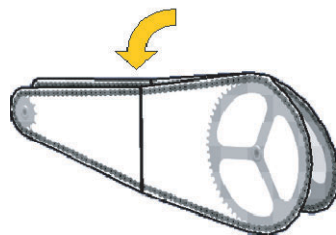
Press down the folded part after gluing to make sure it dries flat.



* Do not glue the two parts together until the final stage of bicycle assembly.

Chain drive

Fold the chain drive part in half and glue the halves together. Press it down with something heavy to keep it flat until it dries.



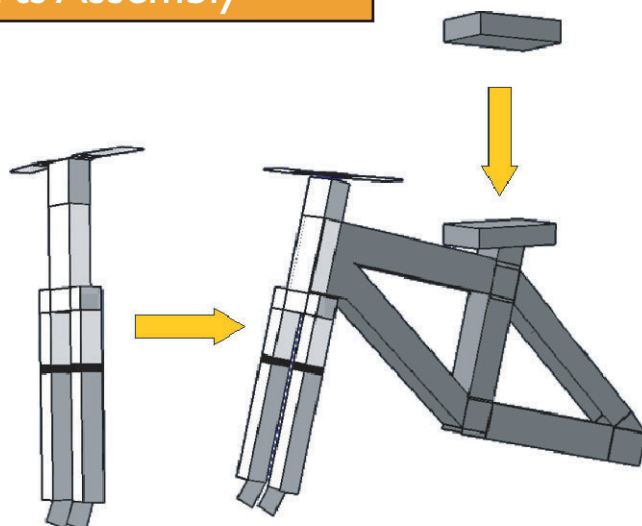
Rear fender

Fold the rear fender part in half and glue the halves together. Press it down with something heavy to keep it flat until it dries.



Main Bicycle Parts Assembly

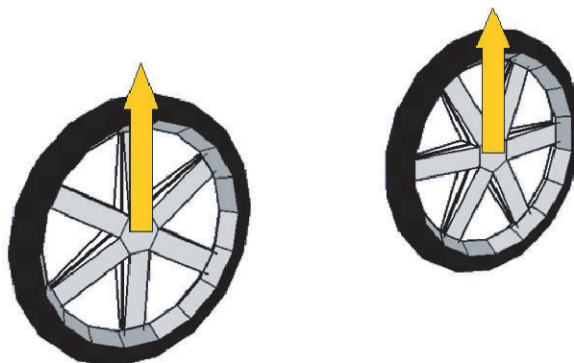
Insert the fork into the front part of the frame and glue them together.



Glue the facet with D on the saddle to facet D on the frame.

Glue the M and N marks of the rear wheel to the rear section of the frame.

Glue the A and B marks of the front wheel to the front section of the frame where it is marked A and B respectively.



Main MURATA BOY Parts Assembly

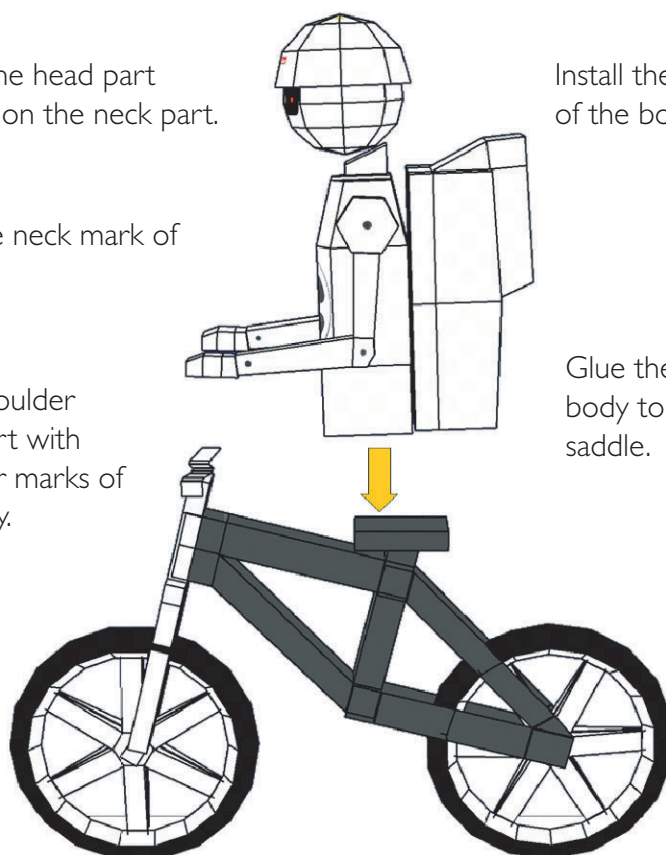
Glue the head mark on the head part together with head mark on the neck part.

Glue the neck part to the neck mark of the body part.

Glue the right and left shoulder marks of the shoulder part with the right and left shoulder marks of the body part respectively.

Install the backpack on back of the body part.

Glue the bottom part of the body to the front half of the saddle.



Final Bicycle Parts Assembly

Bend the rear fender to make a U shape. Glue it to the O and P marks on the rear section of the frame.

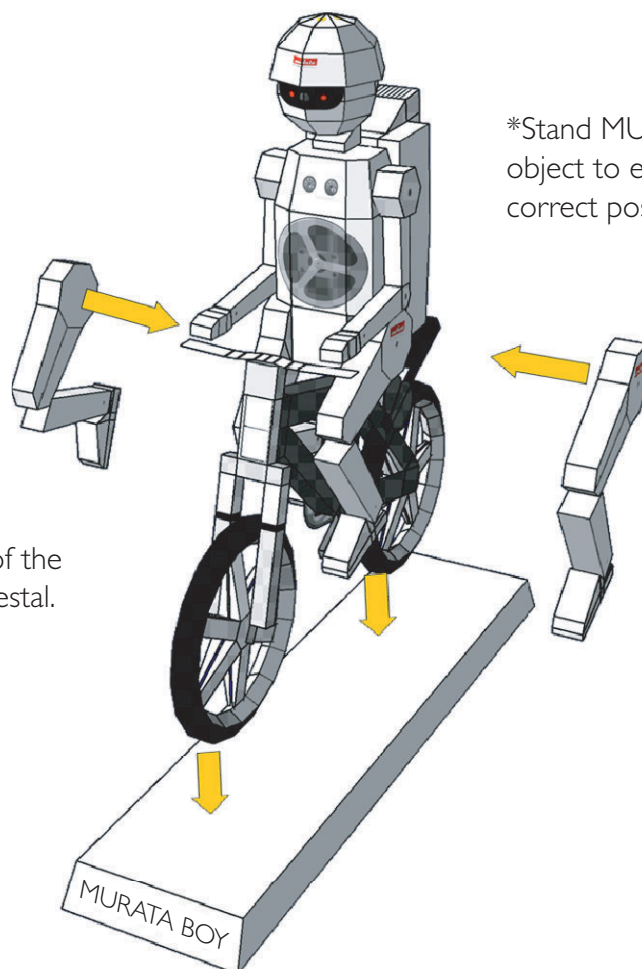
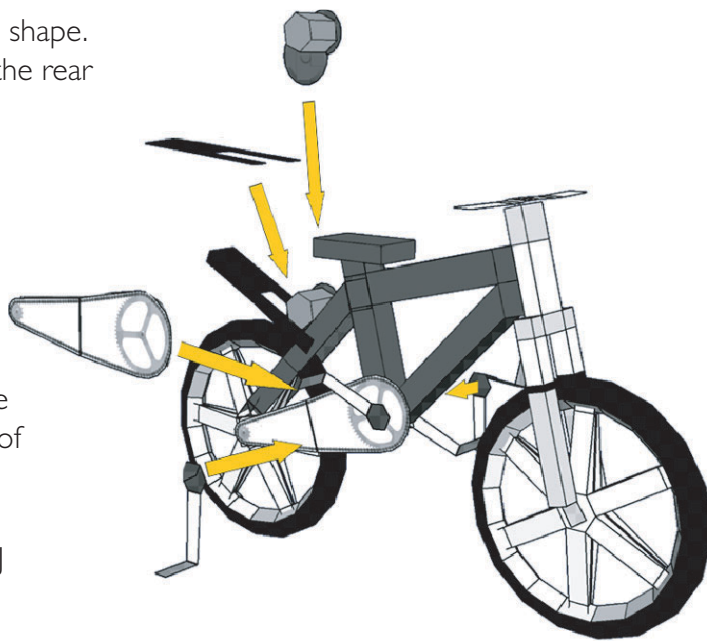
Glue the two motor parts together at the L marks, and glue it to the front of the rear fender.

Glue the K mark of the chain drive to the K mark of the rear section of the frame.

Glue the J mark of a pedal to the J mark of the chain drive.

Glue the left and right thigh marks to the body, matching their angles with the pedals.

Glue the I mark of a pedal to the I mark of the rear section of the frame.



Glue the bottom of the wheels to the pedestal.

*Stand MURATA BOY against some object to ensure that he dries in the correct position.

