

## RFA Series

• 85°C 20,000Hrs assured.  
(8,000Hrs for 550Vdc)

- Non-solvent proof.
- High Ripple Capability.
- Long Life.
- For Elevator, Industrial Inverter.
- RoHS compliant.



## SPECIFICATIONS

Item	Characteristics
Rated Voltage Range	350 ~ 550 V <sub>DC</sub>
Operating Temperature Range	-25 ~ +85°C
Capacitance Tolerance	±20% (M) (at 20°C, 120Hz)
Leakage Current	I = 0.02CV or 5mA, whichever is smaller. Where, I: Max. Leakage current (µA) C: Nominal capacitance (µF) V: Rated voltage (V <sub>DC</sub> ) (at 20°C, 5 minutes)
Dissipation Factor(Tanδ)	0.25max. (at 20°C, 120Hz)
Temperature Characteristics (Capacitance change ratio)	C(-25°C)/C(20°C) ≥ 0.7 (at 120Hz)
Insulation Withstanding Voltage	When a voltage of 2,000V <sub>AC</sub> is applied for one minute between the terminals shorted each other and the mounting clamp on the insulating sleeve covering the case, there shall not be electrical damage.
Load Life	The following specifications shall be satisfied when the capacitors are restored to 20°C. after the rated voltage with the rated ripple current is applied (the peak voltage shall not exceed the rated voltage) for 20,000 hours 85°C. (8,000Hrs for 550 V <sub>DC</sub> ) Capacitance change ≤ ±30% of the initial value Tanδ ≤ 300% of the initial specified value Leakage current ≤ The initial specified value
Shelf Life	The following specifications shall be satisfied when the capacitors are restored to 20°C after the exposing them at 85°C for 500 hours without voltage applied. The rated voltage shall be applied to the capacitors for a minimum of 30 minutes, at least 24 hours and not more than 48 hours before the measurements. Capacitance change ≤ ±20% of the initial value Tanδ ≤ 300% of the initial specified value Leakage current ≤ The initial specified value
Others	Satisfied characteristics KS C IEC 60384-4

## RATED RIPPLE CURRENT MULTIPLIERS

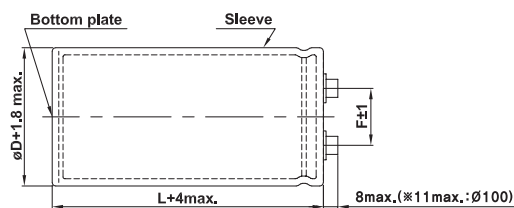
Frequency Multiplying Factor

Frequency(Hz)	60	120	300	1k	3k
Factor	0.8	1.0	1.1	1.3	1.4

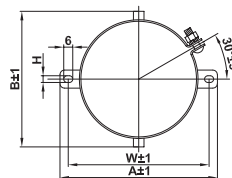
## DIMENSIONS OF RFA Series

Unit(mm)

Marking : BLACK SLEEVE, GOLD INK

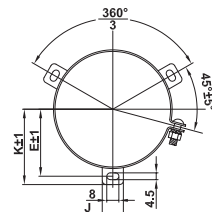


### B type mounting clamp



øD	A	B	W	H	F
63.5	90	75	80	4.5	28.0
76.5	104.5	90	93.5	4.5	31.5

### C type mounting clamp



øD	E	K	J	F
63.5	38.1	43.5	14	28.0
76.5	44.5	50.0	14	31.5
89	50.8	56.5	16	31.5
100	56.5	63.4	18	41.5

(Screw specifications)

øD = ø63 ~ ø89

• Plus hexagon-headed screw: M5×0.8×12

• Maximum screw tightening torque: 3.23N·m (33kg·cm)

øD = ø100

• Cross-recessed head (Phillips) screw: M8×1.25×16

• Spring washer, Washer  
• Maximum screw tightening torque: 6.31N·m(64kg·cm)

RATINGS OF RFA Series

V <sub>DC</sub>	Capacitance (μF)	∅D×L(mm)	Tanδ	Rated Ripple Current (Arms/85°C, 120Hz)	V <sub>DC</sub>	Capacitance (μF)	∅D×L(mm)	Tanδ	Rated Ripple Current (Arms/85°C, 120Hz)	
350	3,300	63.5×120	0.25	11.1	500	1,200	63.5×90	0.25	5.3	
	3,900	63.5×130	0.25	12.8		1,500	63.5×100	0.25	6.3	
	4,700	63.5×160	0.25	15.2		1,800	63.5×120	0.25	7.4	
	4,700	76.5×120	0.25	14.7		2,200	76.5×110	0.25	9.0	
	5,600	63.5×170	0.25	17.3		2,700	76.5×130	0.25	10.3	
	5,600	76.5×130	0.25	16.9		3,300	76.5×140	0.25	11.9	
	6,800	63.5×190	0.25	20.0		3,900	76.5×150	0.25	13.3	
	6,800	76.5×160	0.25	20.2		4,700	89×150	0.25	15.3	
	8,200	76.5×170	0.25	23.1		5,600	89×170	0.25	18.2	
	10,000	89×160	0.25	26.6		6,800	89×190	0.25	21.0	
	12,000	89×190	0.25	32.0		10,000	100×220	0.25	29.0	
	18,000	100×220	0.25	44.7		12,000	100×250	0.25	33.7	
	22,000	100×250	0.25	52.3		550	1,000	63.5×120	0.25	4.7
400	2,700	63.5×120	0.25	10.1	1,200		63.5×130	0.25	5.3	
	3,300	63.5×130	0.25	11.7	1,500		76.5×130	0.25	6.8	
	3,900	63.5×160	0.25	13.5	2,200		89×130	0.25	9.4	
	3,900	76.5×120	0.25	14.7	2,700		89×150	0.25	10.8	
	4,700	63.5×190	0.25	15.8	3,300		89×170	0.25	12.6	
	4,700	76.5×130	0.25	15.5	3,900		89×190	0.25	13.7	
	5,600	63.5×190	0.25	18.2	4,700		89×220	0.25	15.1	
	5,600	76.5×160	0.25	18.3	6,800		100×220	0.25	20.6	
	6,800	76.5×170	0.25	21.0	8,200		100×250	0.25	24.9	
	8,200	89×160	0.25	24.1	450		2,200	63.5×120	0.25	9.1
	10,000	89×190	0.25	29.1			2,700	63.5×130	0.25	10.6
	15,000	100×220	0.25	40.6			2,700	76.5×120	0.25	11.2
	18,000	100×250	0.25	47.1		3,300	63.5×160	0.25	12.7	
450	2,200	63.5×120	0.25	9.1		3,300	76.5×130	0.25	13.0	
	2,700	63.5×130	0.25	10.6		3,900	63.5×170	0.25	14.4	
	2,700	76.5×120	0.25	11.2		4,700	76.5×160	0.25	16.7	
	3,300	63.5×160	0.25	12.7		5,600	76.5×170	0.25	21.1	
	3,300	76.5×130	0.25	13.0		5,600	89×160	0.25	19.9	
	3,900	63.5×170	0.25	14.4		6,800	89×170	0.25	23.0	
	4,700	76.5×160	0.25	16.7		8,200	89×190	0.25	26.4	
	5,600	76.5×170	0.25	21.1		12,000	100×220	0.25	36.3	
	5,600	89×160	0.25	19.9		15,000	100×250	0.25	42.9	
	6,800	89×170	0.25	23.0						
	8,200	89×190	0.25	26.4						
	12,000	100×220	0.25	36.3						
	15,000	100×250	0.25	42.9						

Note : When long life performance is required in actual use, the rms ripple current has to be reduced.