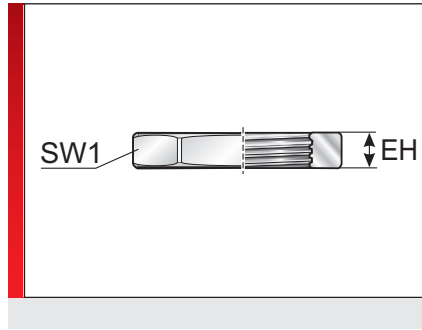
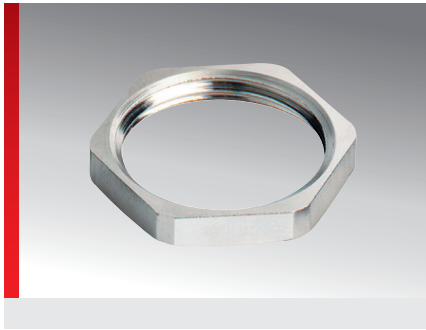


Type GM (metal lock nut)




Accessories

PRODUCT INFORMATION

The GM type lock nut is made of brass with nickel plating. It is available with metric or Pg thread and usable for all corresponding conduit and cable fittings, preferably with metal threads.

SPECIFICATIONS

-  Brass nickel-plated
-   RoHS

Type	Order No.	IG	EH mm	SW 1 mm	Pack qty.
Pg threads					
GM-Pg 48	83722028	Pg 48	5.50	64.00	50

MATERIAL PROPERTIES

-  Brass nickel-plated

TECHNICAL INFORMATION

-  Halogen-free

CONFORMITY

-  RoHS (EC Directive 202/95/EC)