

Specification

Lithium Polymer Battery Pack (LP401421) 70mAh 3.7V with Protection Circuit Module (PCM)

This data sheet describes the requirements and properties of lithium polymer rechargeable battery pack manufactured by AKYGA

Mechanical Characteristics

Type number: LP401421
 Designation IEC system: Lithium polymer battery pack
 Length: 21 ± 0.4 mm
 Width: 14 ± 0.4 mm
 Thickness: 4.0 ± 0.2 mm
 Cable: 20.0 ± 3 mm (28AWG UL 1007)
 Weight approx: 1.6g

Electrical Specification

Rated capacity: 70mAh min, 75mAh typ.
 Nominal voltage: 3.7V
 Max. operating voltage range: 3.0V to 4.2V
 Charge voltage: 4.2 ± 50 mV
 Initial charge current: Standard charge: 35mA
 Rapid charge: 70mA
 Charging cut-off (A or B)
 A) By time: Standard charge: 7 hours
 Rapid charge: 4 hours
 B) By min. current: 14mA
 Max continuous discharge current: 70mA
 Internal impedance (1kHz): approx 260mOhm
 Exp. cycle life: >500 cycles >80% of initial cap. (0.5C/0.5C)
 Cell protection
 Overcharge detection: 4.325 ± 25 mV
 (0.5 to 2.0 sec. delay, resume 4.075 ± 50 mV)
 Overdischarge detection: $2.50V \pm 80$ mV
 (6.25 to 250msec. delay, resume $2.9V \pm 100$ mV)

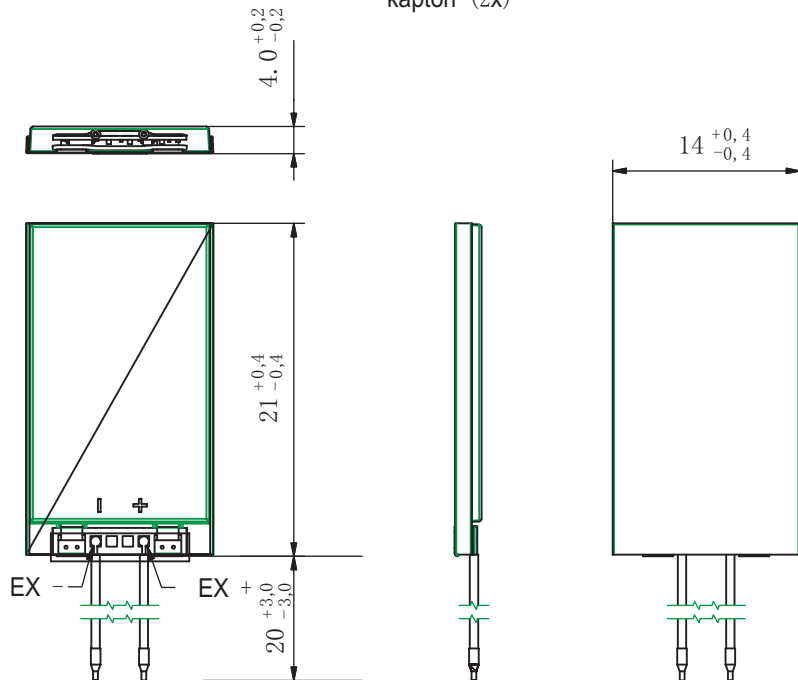
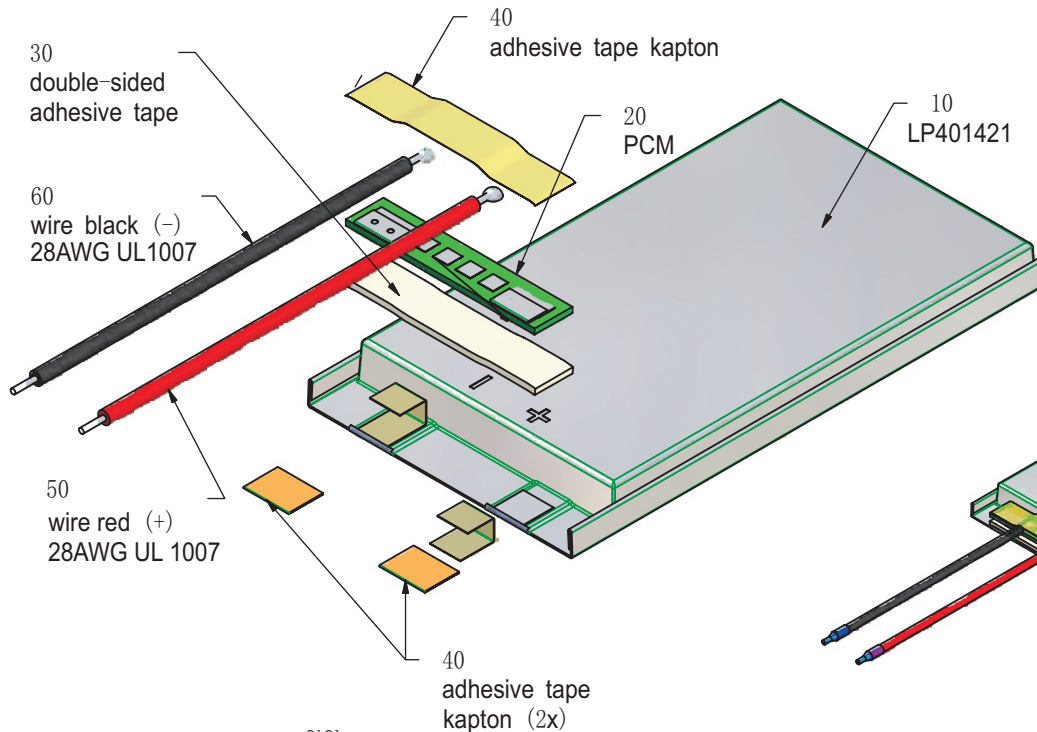
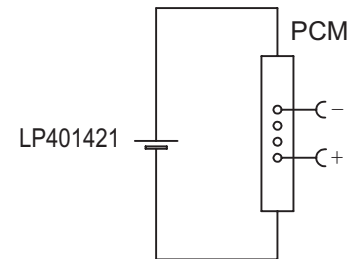
Ambient conditions

Temperature range
 Charge: 0 to +45°C
 Discharge: -20 to +60°C
 Charge retention/Storage: 1 year at -20 to 20°C >70%
 3 month at -20 to 45°C >70%
 1 month at -20 to 60°C >70%

Safety

Please follow handling and Safety Precautions Poliflex.

Circuit diagram



Index		Alteration		Date	Name
Projection:		Diese Mae werden besonders gepruft This dimensions are considered inspectable		Material 6645178 4786	
Mae in mm	Freimatoleranzen	Date	Name		
All dimensions in mm	Generaltoleranzen	Erst./Orig. 23.06.2013	Xie Qingfang		
Als Betriebsgeheimnis anvertraut, alle Rechte vorbehalten.	up to 6 ' 0,1 over 6 up to 30 ' 0,2	Gepr./Check 23.01.2013	Guo Daxia		
Proprietary data, company confidential, all rights reserved.	over 30 up to 100 ' 0,3 over 100 ' 0,5	Benennung/Designation LP401421		Zchnng. / Dwg. Nr. 3 FD_3255_30	Index